



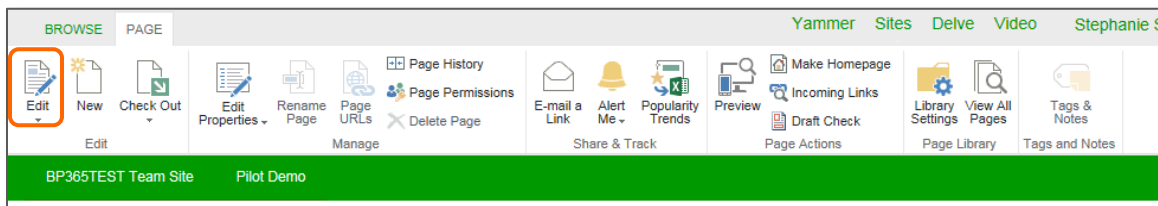
SharePoint Online: Adding an App Part to a Page

With the focus on apps in SharePoint Online, each new document library or list is created as a separate application within the site. As a result, if you want to expose a view into a list or document library on the Home page (or any other page) of your site, you will need to make use of the new app part to show this data.

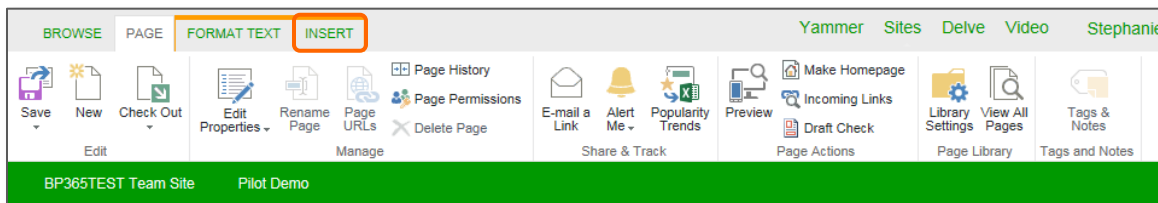
- On the ribbon tab, click the Page tab.



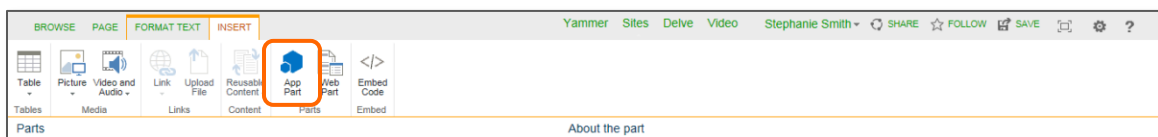
- In the Edit group, click the Edit button.



- Find an insert point on the page and click to place your cursor at this location. On the ribbon, click the Insert tab.

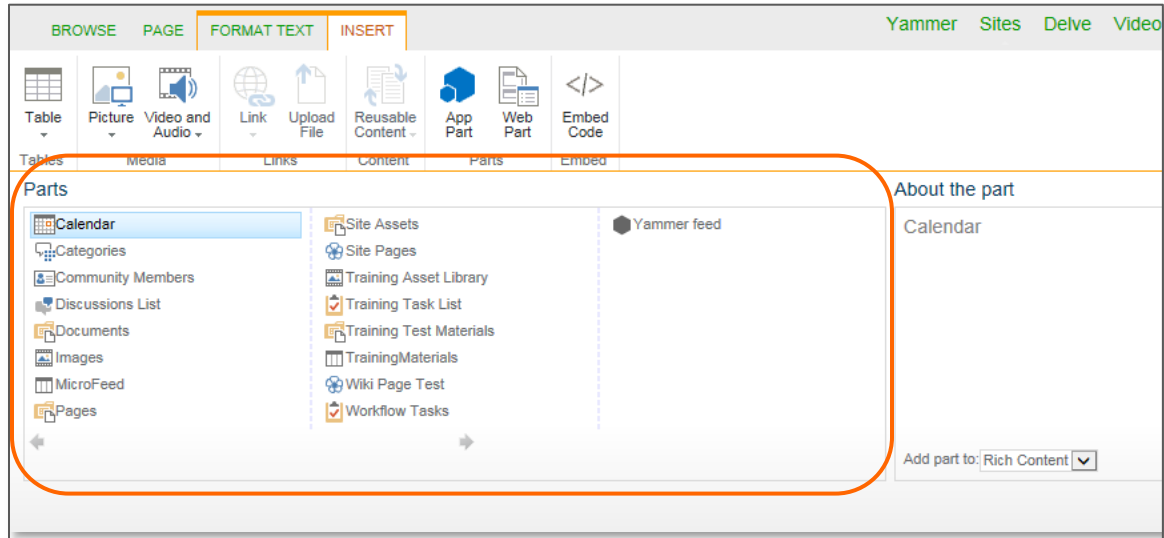


- In the Parts group, click the app part button.

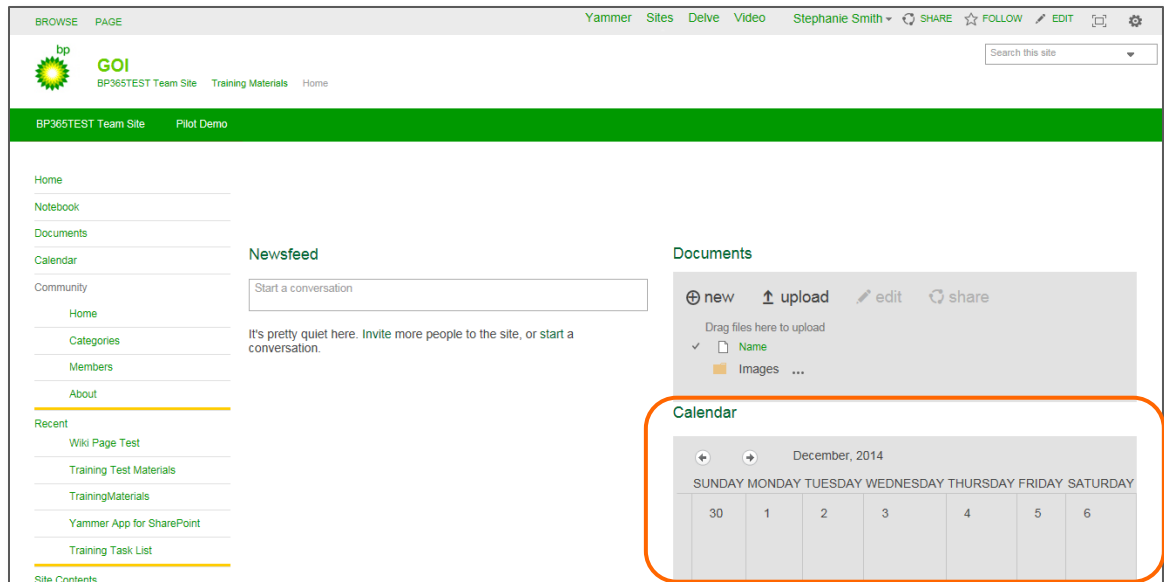




- In the Parts section of the Add an app part window that appears, click the name of the app part that you want to add.



- Click the Add button. Your new app has been added to your page.





- Click the Save icon to save your page changes.

